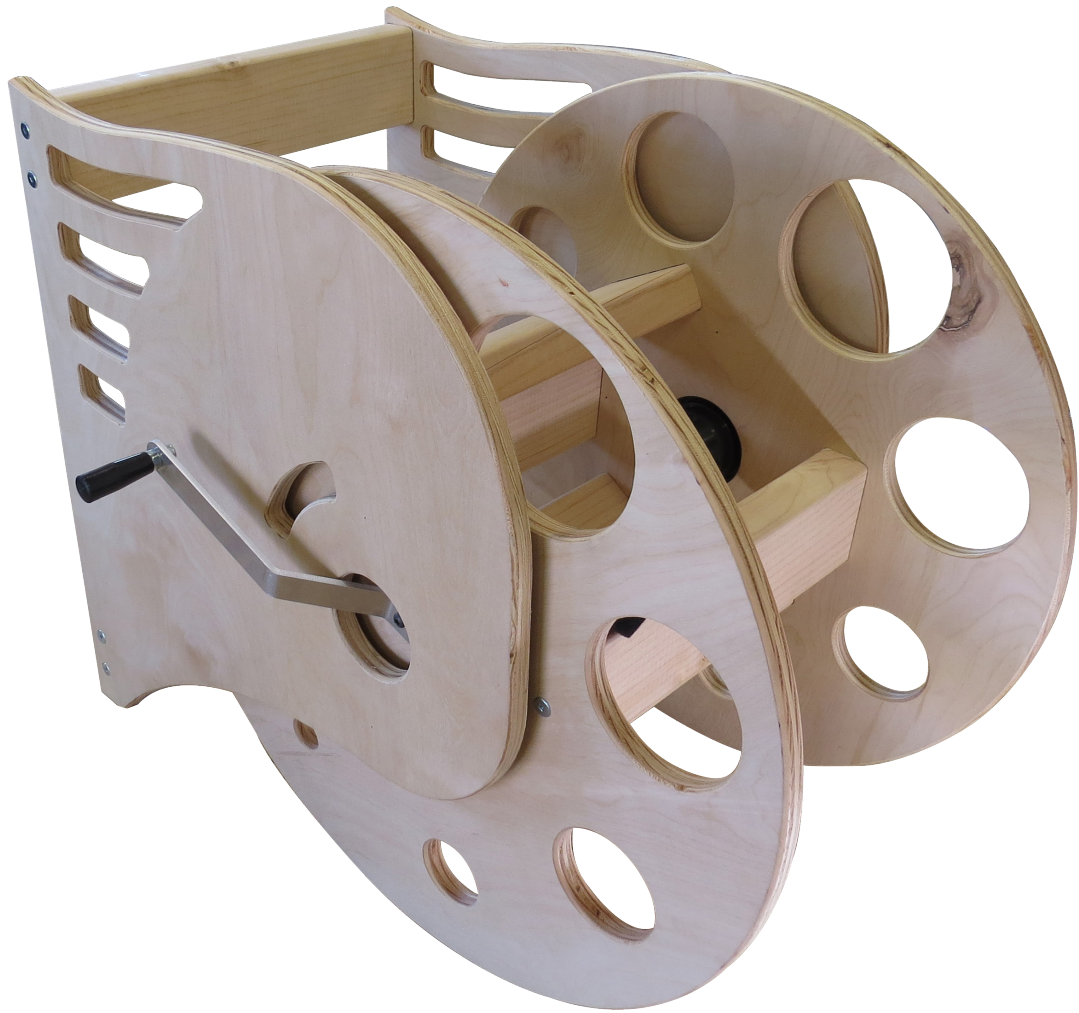


SUPER REEL KIT

ASSEMBLY INSTRUCTIONS



FastCap, LLC

5016 Pacific Highway
Ferndale, WA 98248

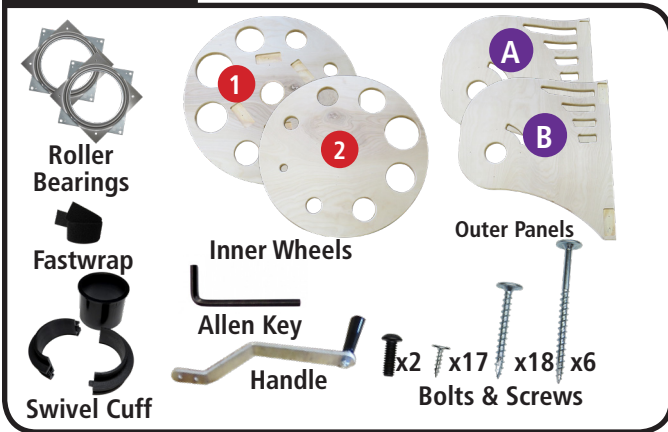
Toll Free: 1-888-443-3748
Phone: 1-360-752-2138
Fax: 1-360-650-1075

Web: www.fastcap.com
Email: info@fastcap.com

January 2019

SUPER REEL INSTRUCTIONS

STEP 1



UNPACK BOX AND LAY OUT PARTS

STEP 2



DETERMINE YOUR 2x4s LENGTH

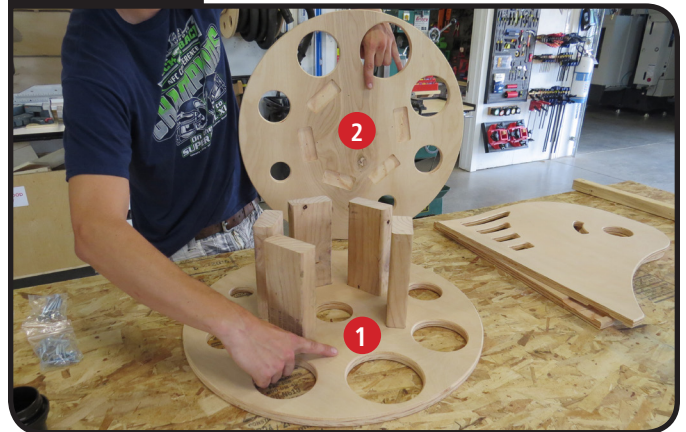
*Note: For every 10' of hose add 3" to your 2x4s • (5)2x4s will be the same size and (2) will be 2" longer for attaching the outer panels

STEP 3



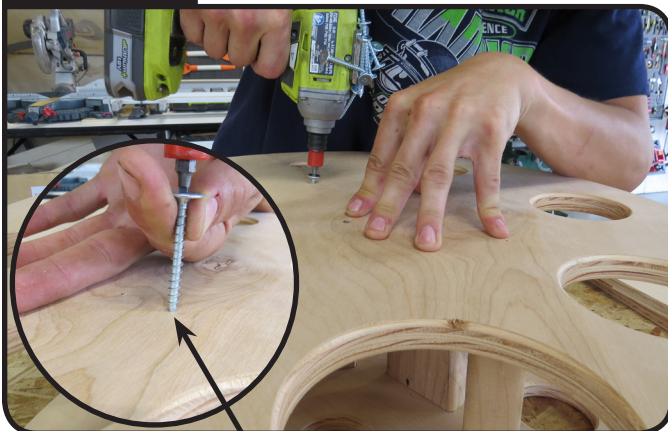
AFTER 2x4s ARE CUT TO SIZE PLACE INTO POCKETS ON INNER WHEEL 1

STEP 4



TAKE INNER WHEEL 2, ALIGN WITH 2x4s, AND FIT INTO PLACE

STEP 5



FIND THE 5 PREDRILLED HOLES AND DRILL 2" WOOD SCREWS INTO 2x4s

*Note: There will be 4 other predrilled holes closer to the middle of the inner wheels. Leave them! They are for a different step.

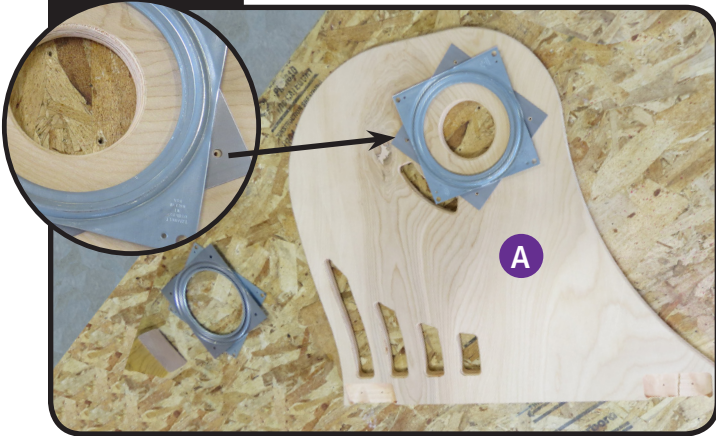
STEP 6



PLACE ONE HAND ON TOP AND ON THE UNDER SIDE OF THE INNER WHEELS. CAREFULLY FLIP TO THE OTHER SIDE AND REPEAT STEP 5

SUPER REEL INSTRUCTIONS

STEP 7



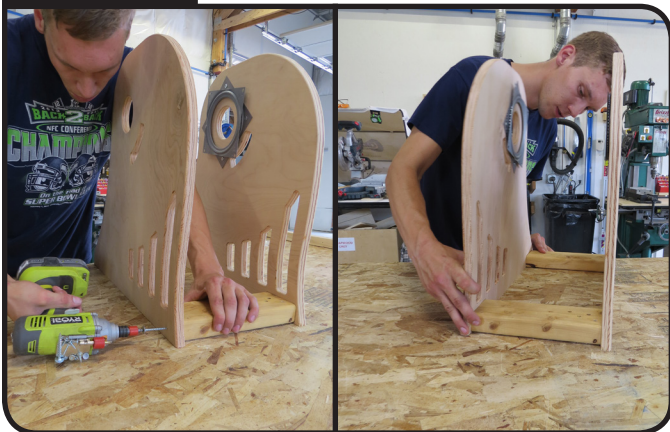
ON THE INSIDE OF BOTH OUTER PANEL **A** & **B** ALIGN ROLLER BEARINGS ON PREDRILLED HOLES

STEP 8



THEN ATTACH WITH MINI POWERHEAD SCREWS

STEP 9



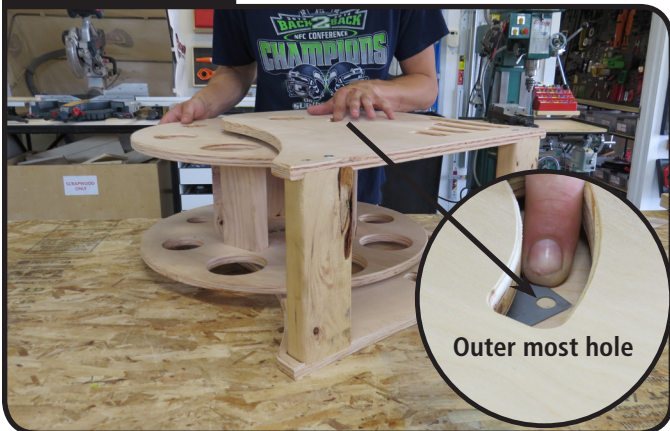
PLACE REMAINING 2x4s INTO POCKETS AND SCREW 2" SCREWS INTO PREDRILLED HOLES

STEP 10



ROLL WHEEL INTO OUTER PANEL AND ALGIN WITH CENTER HOLES

STEP 11



FLIP THE SUPER REEL ON ITS SIDE AND ALIGN EACH CORNER OF ROLLER BEARING WITH PREDRILLED HOLES

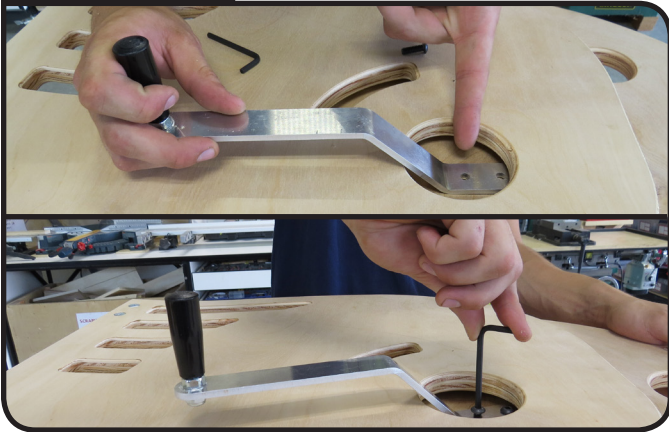
STEP 12



SECURE ROLLER BEARING WITH MINI POWERHEAD SCREWS, FLIP SUPER REEL TO OTHER SIDE, AND REPEAT STEP 11

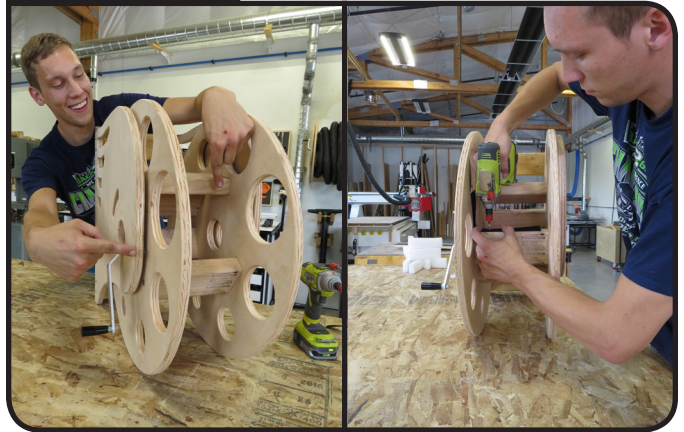
SUPER REEL INSTRUCTIONS

STEP 13



ALIGN HANDLE WITH THE PREDRILLED HOLES AND SECURE WITH 1/4"-20x3/4" BOLTS

STEP 14



LOCATE THE LARGE SPACE BETWEEN THE 2x4s AND ATTACH 10" FASTWRAP ON THE HANDLE SIDE

STEP 15



ASSEMBLE AND PLACE THE VACUUM SWIVEL CUFF INTO HOLE OPPOSITE THE HANDLE

**Note: Longer side of the swivel cuff facing out.*

STEP 16



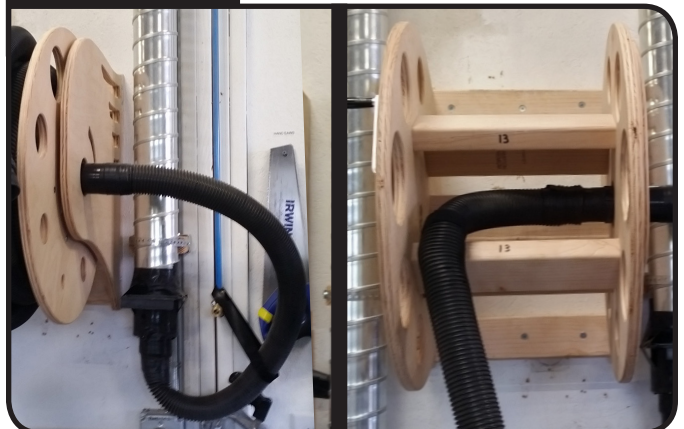
PREDRILL THE 3" SCREWS BEFORE MOUNTING TO WALL

STEP 17



MOUNT THE SUPER REEL TO WALL

STEP 18



ATTACH VACUUM TO OUTSIDE OF THE SUPER REEL AND ATTACH HOSE TO INSIDE. SECURE HOSE WITH FASTWRAP AND REWIND YOUR HOSE!

Super Reel Instructions

2x4 is not included

Description	Dimensions	Quantity
① Inner Wheel	21" x 23"	1
② Inner Wheel	21" x 23"	1
Ⓐ Outer Panel	23¼" Round	1
Ⓑ Outer Panel	23¼" Round	1
Hardware Kit		Quantity
① Handle		1
② ¼"-20x¾" Bolt		2
③ Allen Key		1
④ Roller Bearings		2
⑤ Mini Powerhead Screws		17
⑥ 2" Wood Screws		18
⑦ 3" Wood Screws		6
⑧ Phillips Drive		1
⑨ #2 Square Drive		1
⑩ 10" Fastwrap		1
⑪ Vacuum Swivel Cuff		1

